

Single run

Filter (Measurement routine)

Picture

1



2



3



Pleu

Sphere30.F

Flansch 787.PRG



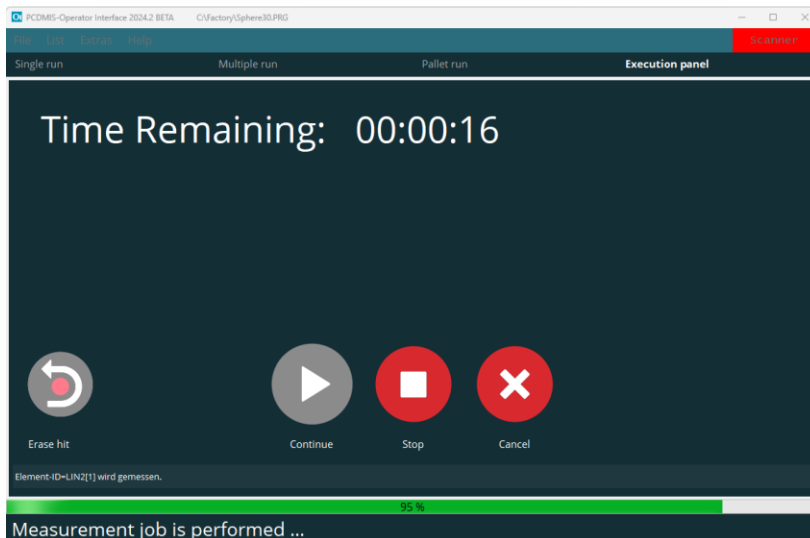
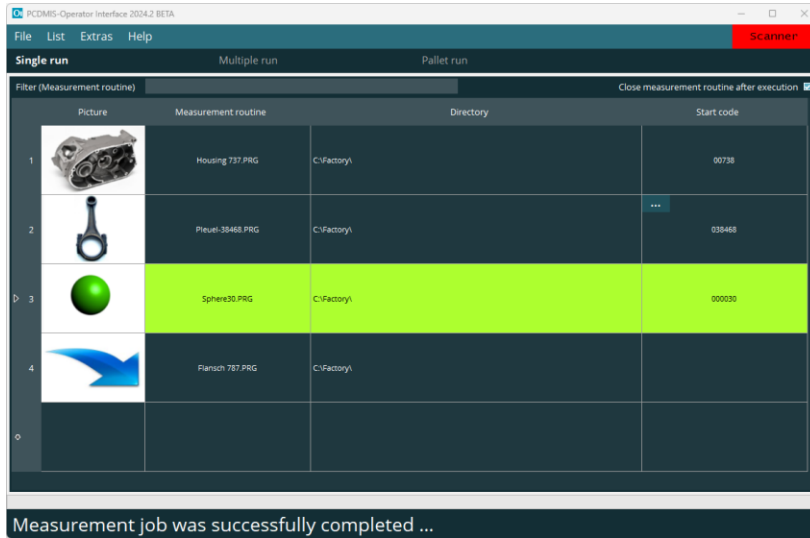
HEXAGON

PC-DMIS Operator Interface

Product presentation

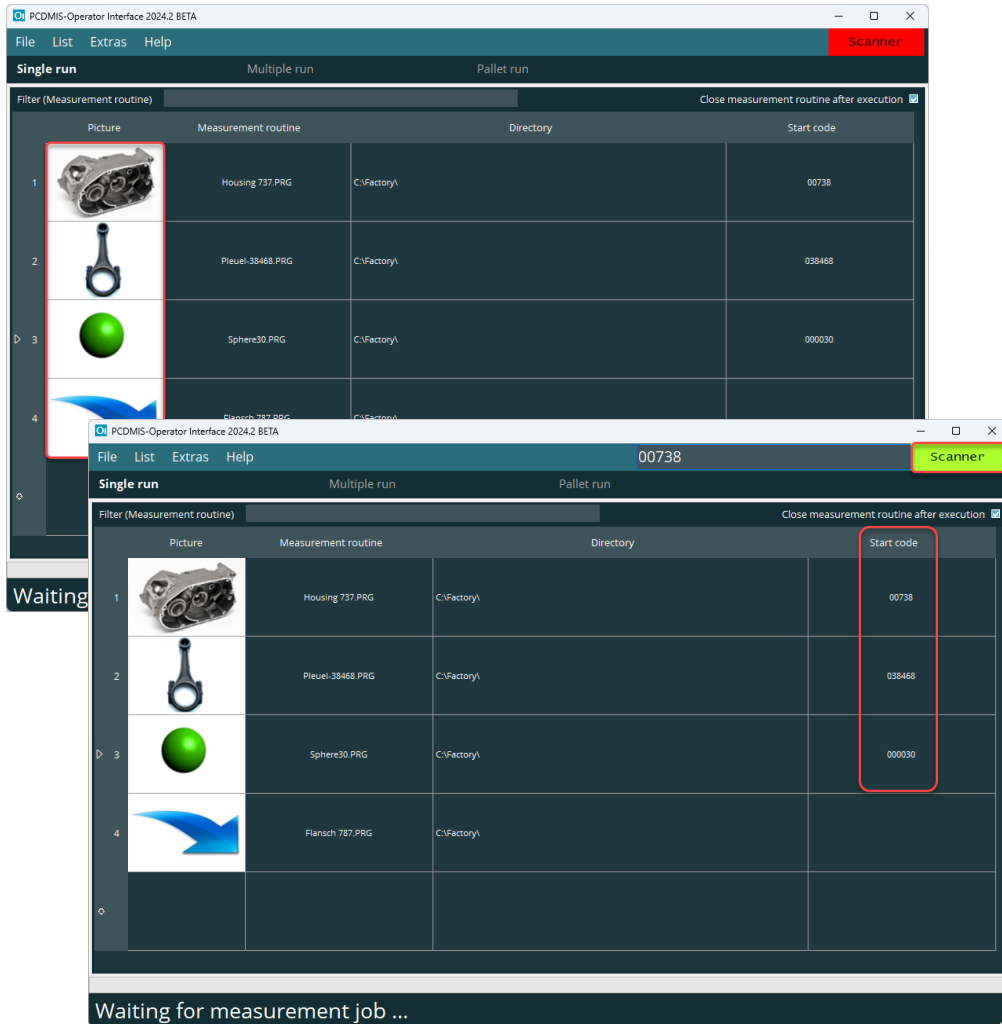
2025-01-13 Customer Solutions Wetzlar

Introduction



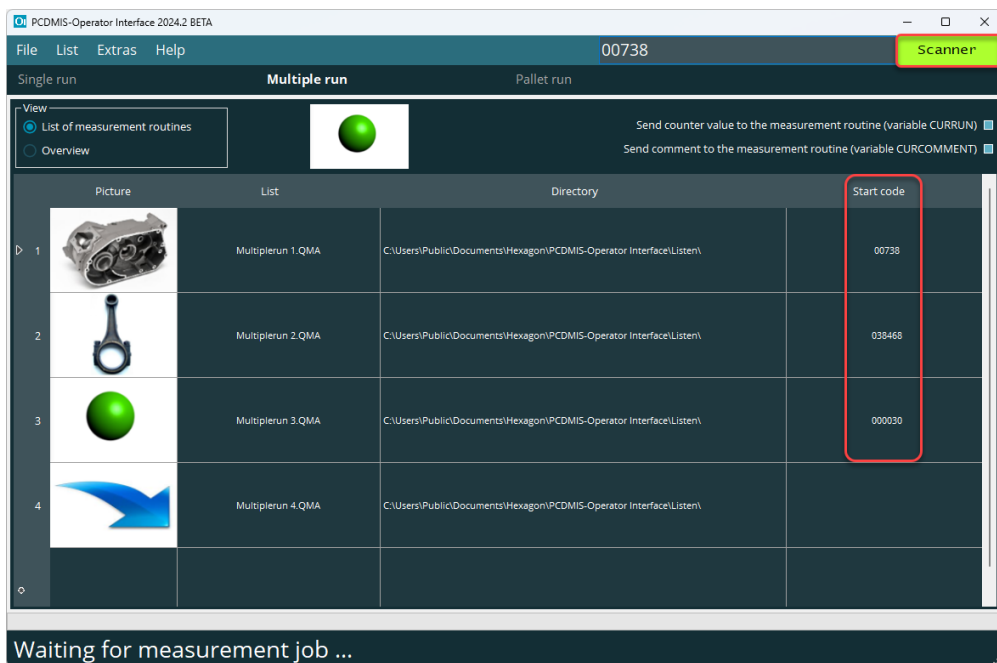
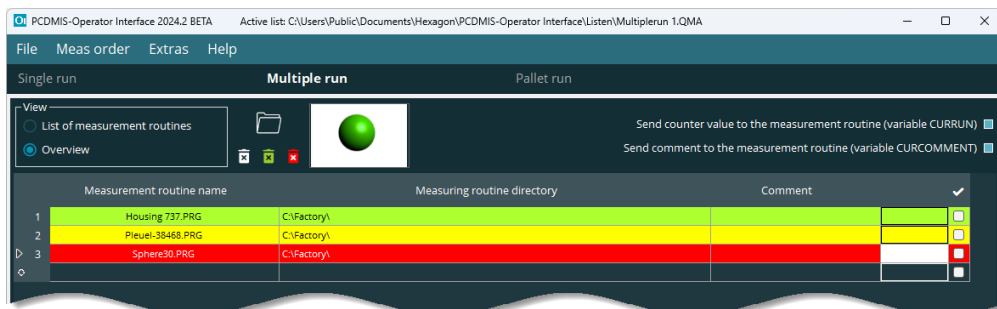
- Powerful tool for convenient starting of PC-DMIS measurement routines
- Program start by mouse click or scanner (barcode, QR-code etc.)
- Execute measurement routines in single run, multiple run or pallet run
- Graphic user interface for intuitive operation
- measurement routines can be paused, aborted, or continued
- A progress bar shows the processing status

Single Run



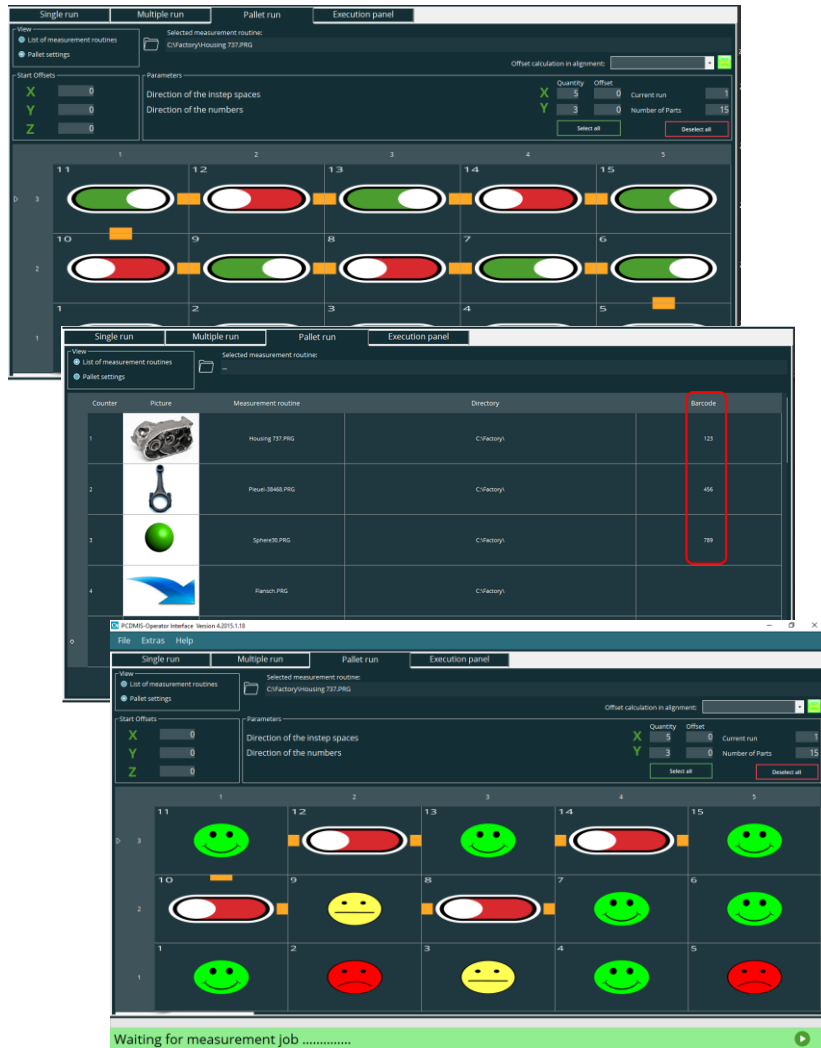
- Creation of measurement routine lists, which can be saved and called up again at a later point in time
- The lists can be changed / supplemented at any time
- Simple assignment and measurement routine selection using images
- Easy start of the measurement routine with a mouse click or scanner (barcode, QR-code etc.) → maximum security

Multiple Run



- Start several measurement routines with one mouse click
- Skipping measurement routines (lines) and colored display
- Creation of measurement routine2 lists that can be called up later
- Changing / supplementing this list is possible at any time
- Start the measurement routine list with a mouse click or scanner (barcode, QR-code etc.) → maximum security

Pallet Run



- Palettes can be easily defined
- Graphic representation of the palette
- Define and display unused instep spaces with a mouse click
- Creation of measurement routine lists for the pallet run, which can be called up at a later time
- Starting the measurement routine with a mouse click or scanner (barcode, QR-code etc.) → maximum security
- Graphic display of the measured instep spaces after the measurement

Have we piqued your interest?

Simply download the software from our server and apply for a non-binding demo license.

https://downloads.ms.hexagonmi.com/PC-DMIS_Solution_Modules/PC-DMIS_Operator_Interface/